

The Jungle Adventure

By Sarah Gaunt



'Get your stuff packed, we're going to the jungle' said Luna excitedly.



A lush tropical forest scene with a waterfall in the background. The foreground is filled with dense green foliage, including large ferns and various trees. The waterfall is a bright white stream cascading down a rocky ledge in the distance. The overall atmosphere is misty and serene.

**' Are we there yet? ' said Henry
boredly**

**' Yes we're here Henry,'
said Luna happily**

Luna and Henry were walking together until they found two statues - one of a ninja and one of a wizard. They opened the chest in front of the statues and inside, there was a blunt silver sword.



All of a sudden, the statues came ALIVE and started attacking. The two friends used the sword to take down the dangerous pair. A ninja version of Luna suddenly appeared and a wizard version of Henry appeared next to him.

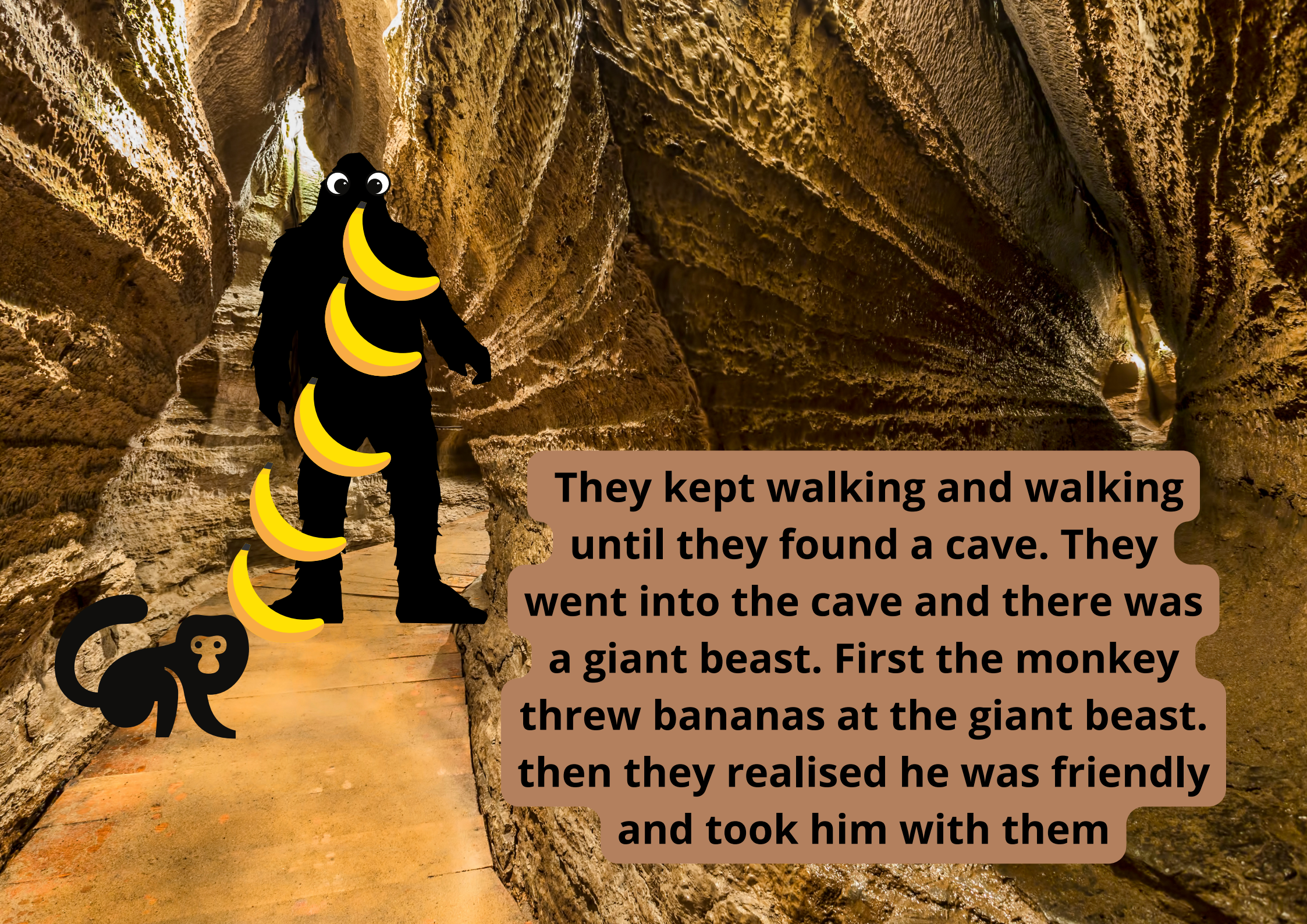




The friends turned and ran through the jungle until they found a dark, old temple. They luckily found a bright torch and decided to enter. Near the entrance, they discovered an old chest with a rusty lock. When they lifted the heavy lid, the earth below them opened up. They tumbled into a deep dark ditch.

Luckily a monkey heard them and found another chest with tape and a rope. Luckily, the monkey helped them out. So they took him with them.





They kept walking and walking until they found a cave. They went into the cave and there was a giant beast. First the monkey threw bananas at the giant beast. then they realised he was friendly and took him with them

**So they kept walking and found a beautiful
brown horse named Zara.**



Afterwards Luna hopped on Zara. They rode off until they found a very very cold icy place. It was even snowing a lot.



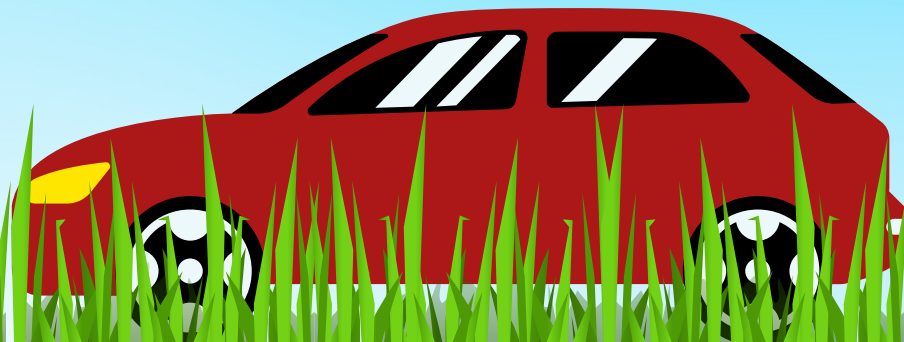
Luna kept riding and they found a penguin named Amelia. She was so adorable. So they grabbed a bucket of snow and put Amelia in it. Then they put the bucket of snow with Amelia in it on the horse.



Luna kept riding and it got warm again. When they looked up they found a beautiful grey sloth in a tree. Luna wanted to climb the tree to get the beautiful grey sloth because it was her favourite animal. Eventually she got the beautiful grey sloth down from the tree and they took him with them.




Luna kept riding and riding. Then Eventually they got back to the car. She barely fitted them all in the car. It was very small and squishy.



Once they got home, they realised that their home was too small so they drove to House Mania.

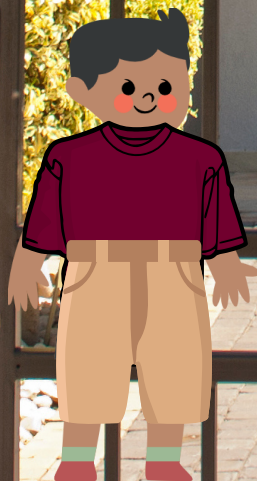




Luckily there was one house that had a swimming pool, massive backyard and a big home so they bought it. After that, they bought a massive car with a cold room in it for the penguin.

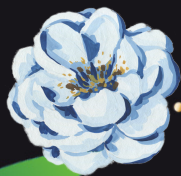
So they all lived happily ever after

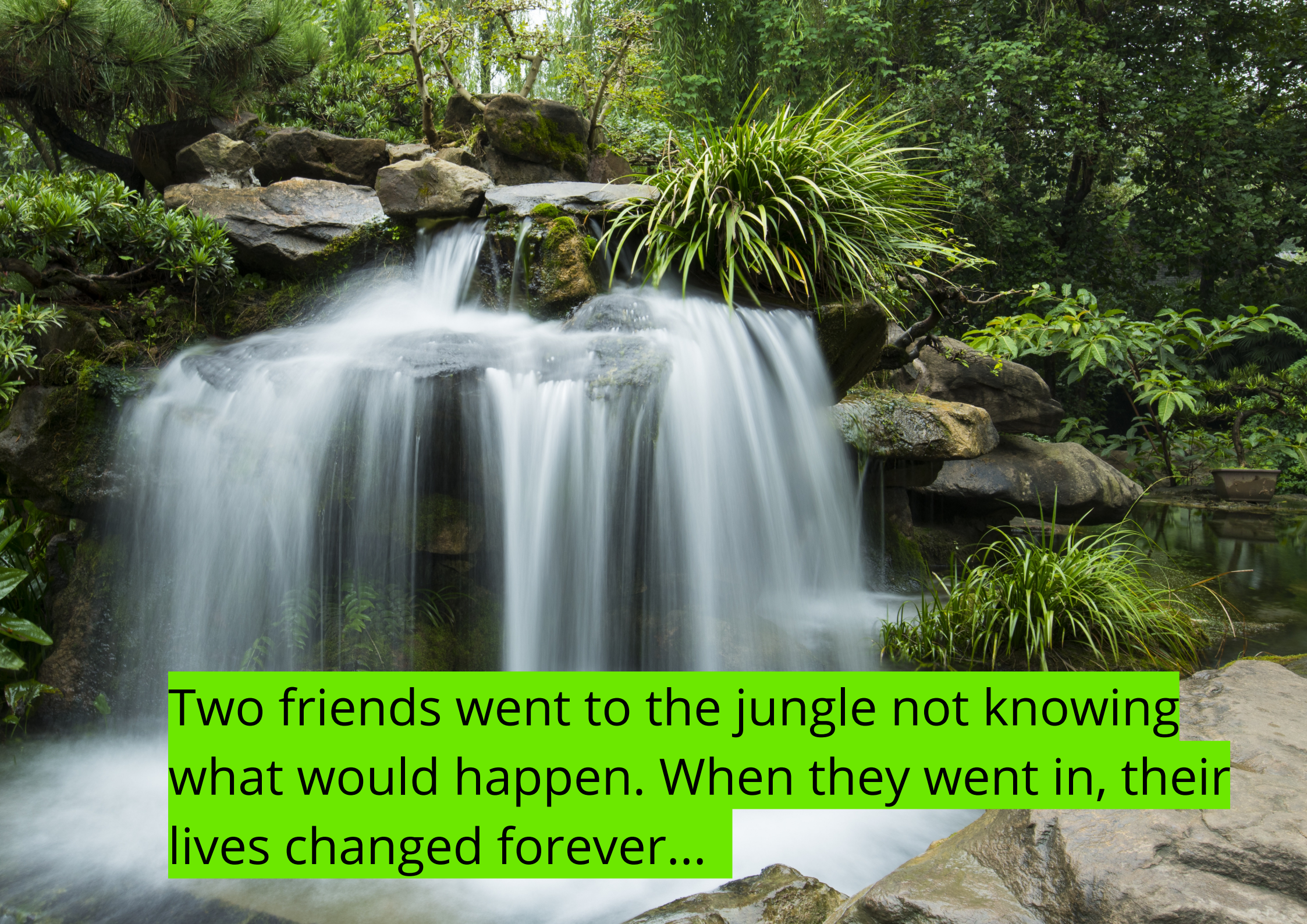
THE END



Sarah Gaunt is a primary school student who has always loved writing. She also really loves art and loves nature.

"I wrote this story because I want to teach people that life has many challenges" SG



A lush garden waterfall cascading over mossy rocks, surrounded by dense green foliage and a small pond. The water is captured in a long-exposure shot, creating a soft, white, misty effect as it falls. The rocks are dark and covered in green moss. The surrounding vegetation includes various types of green plants, including some with long, thin leaves and others with broader leaves. The background is filled with more trees and foliage, creating a dense, natural setting.

Two friends went to the jungle not knowing what would happen. When they went in, their lives changed forever...