

CHECKLIST



My illustration is laid out on A4 page (210mm x 297mm) and vertical/portrait orientation



The work is my own and I have not used another person's images or designs. If using digital artwork, please read the copyright conditions on the assets you use



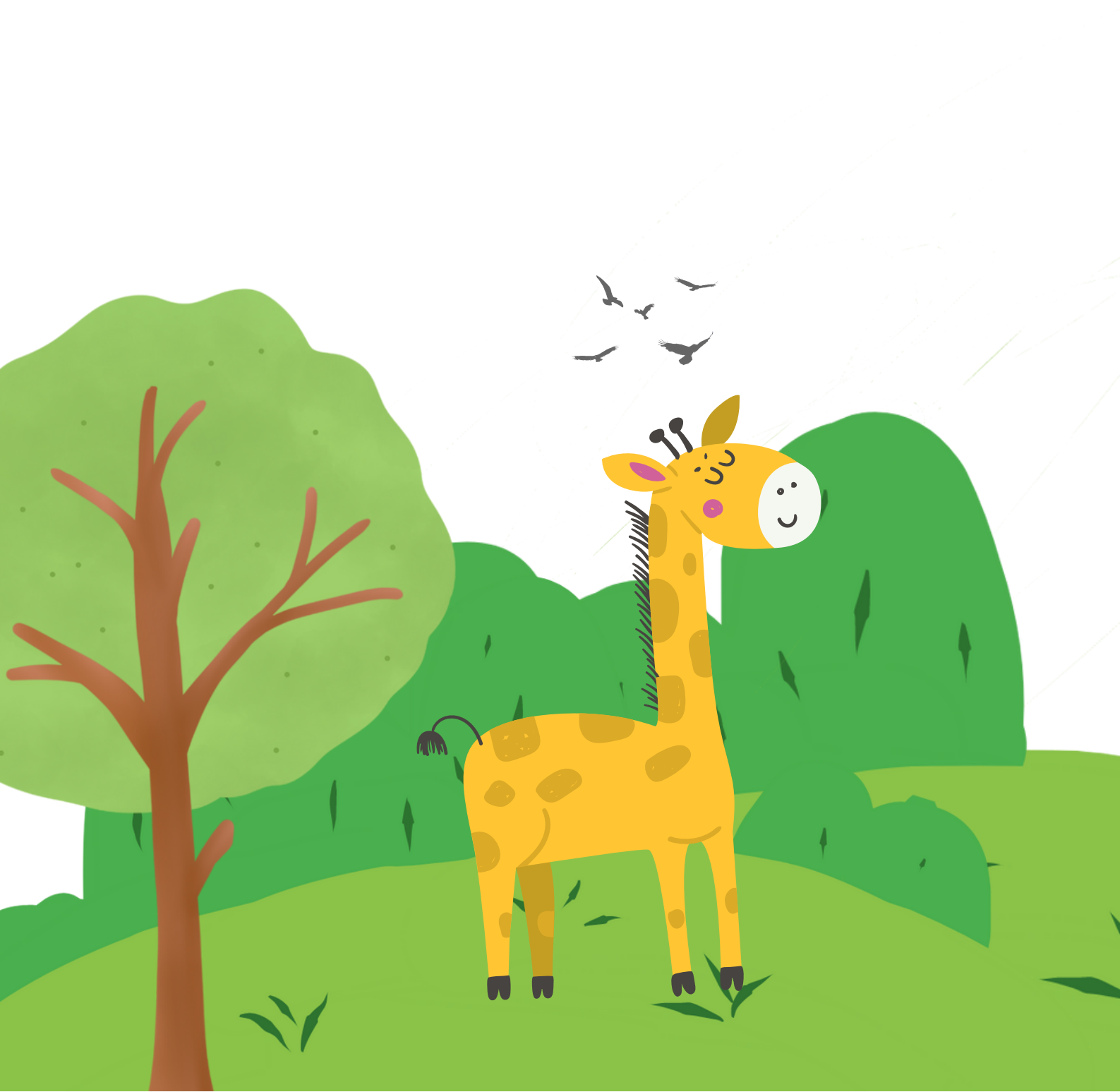
All important detail in my picture is not close to the edges (minimum 2cm away)



I am keeping my artwork in a safe place until the challenge winners have been announced - just in case I need to re-scan the image for the printed copy of the book

EXAMPLE ONE

In this example, the illustration takes up less than half of the page. The illustrator has used the white space as part of the design. The illustrator has kept all of the important details (the giraffe) away from the edges. This is OK



EXAMPLE TWO

In this example, the illustration takes up the full page. The illustrator has kept all of the important details (the mermaid and most of the whale) away from the edges. This is OK



THIS IS VERTICAL / PORTRAIT

← 210mm →

↑
297mm
↓

